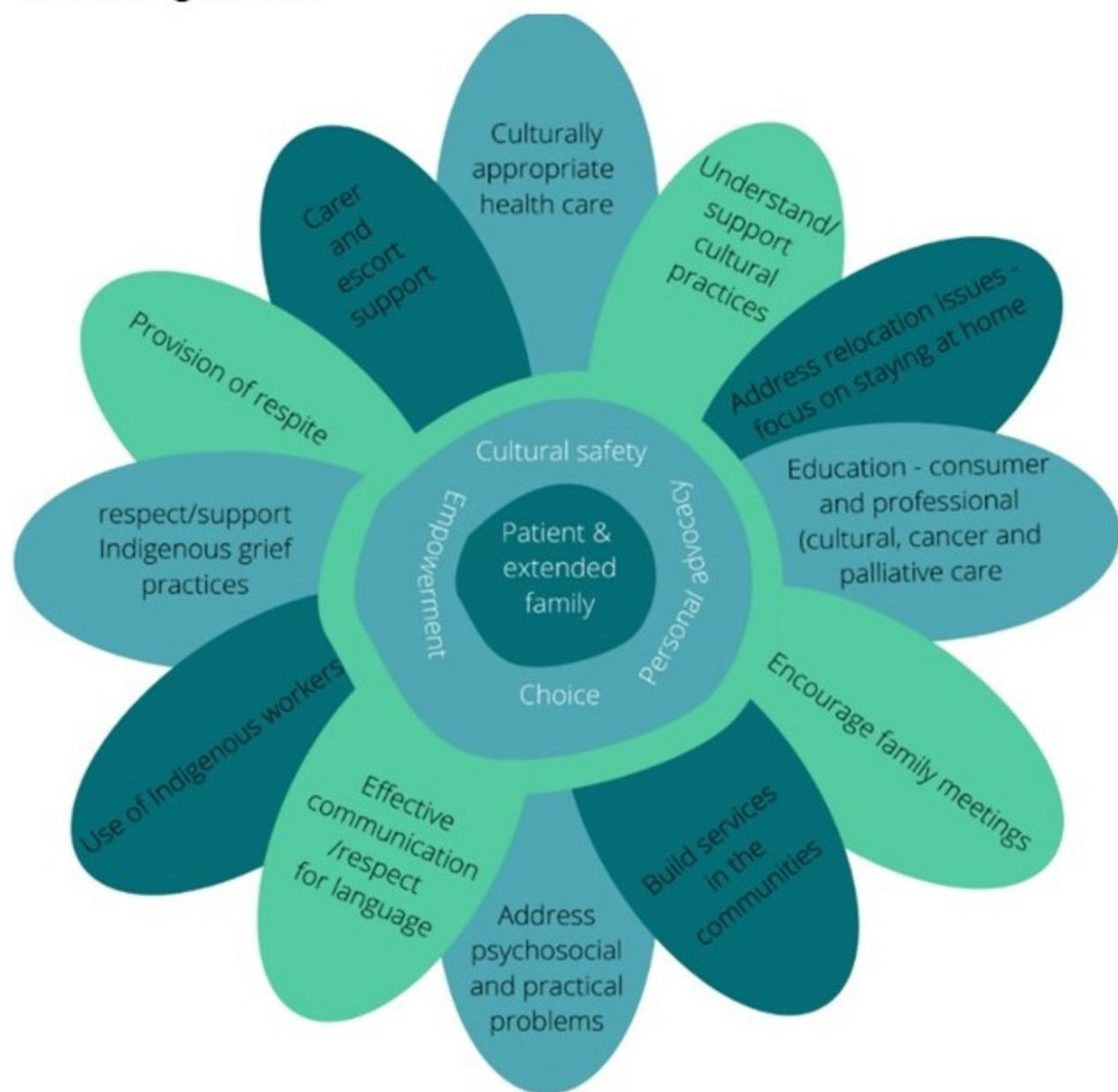


The living model



The 'living model' is a model of care that incorporates all the important factors that can be applied to the unique circumstances of each healthcare service working with Aboriginal and/or Torres Strait Islander people who are affected by life-limiting illness.

McGrath, P, *The Living Model: An Australian Model for Aboriginal Palliative Care Service Delivery with International Implications*. *Journal of Palliative Care*, 2010. 26(1): p. 59-64.

Image source: *Indigenous Program of Experience in the Palliative Approach (IPEPA) Project Team, IPEPA Culturally-responsive care workshop presentation*. 2020, QUT. Used with permission.